

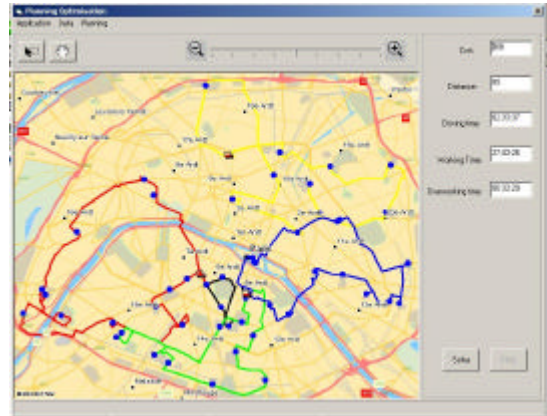
The multi-platform component to efficiently develop your scheduling and optimization application in Windows or Linux environment

TourSolver Developer Kit®: an « all-in-one » planning & scheduling programming component

TourSolver Developer Kit® comes with all the necessary components as well as map data to develop your application:

- ? a **multi-vehicle routing & scheduling component** from Magellan Ingénierie
- ? a **geocoding component** to easily position any address on the map
- ? the DataPack : **cartographic data** in the Magellan Ingénierie format
- ? a **mapping component** to display your results on the map (Windows only)

(1): availability of the geocoding functionality depending on countries
 (2): only available for Navteq or TeleAtlas covered areas



Concepts and constraints handled by TourSolver Developer Kit®

TourSolver Developer Kit uses concepts of « Orders » (orders, deliveries, visits ...) and « Resources » (vehicles, drivers ...).

Each of them has a number of operational properties that can be taken into account in the planning, scheduling and optimization process.

Major constraints handled related to « Orders / Visits »

- ? location
- ? quantities (up to 8 different dimensions)
- ? pick-up and delivery
- ? delivery/visit time-windows (up to 2 per order/visit)
- ? fixed and variable time per order/visit
- ? possible visit days
- ? customer needs or requested characteristics
- ? dispatch to a specific route/vehicle
- ? etc.

Major constraints handled related to « Tours / Routes »

- ? costs (costs/hr, costs/distance, fixed costs, ...)
- ? capacities (up to 8 different dimensions)
- ? working days and hours, lunch breaks
- ? legal drive time customizable constraints
- ? fixed and variable reload time
- ? skills, restrictions and characteristics (vehicle size, driver skills, ...)
- ? scheduling over one day or several days
- ? best/optimum departure time
- ? etc.

Controls and Reports

TourSolver Developer Kit® includes reporting functions in various formats (Microsoft Excel, Microsoft Word or Text) and a number of methods to control the format and the consistency of the data.

Deployment platforms

TourSolver Developer Kit® will enable you to embed mapping and multi-vehicle route optimization features into your logistics solution or into your ERP.

TourSolver Developer Kit® can be used on any platform: desktop, client-server or Internet.

Routing and mapping methods included in TourSolver Developer kit

TourSolver Developer Kit® includes ChronoMap Developer Kit®, hence all of its routing & mapping functionalities.

Compute Drive time, distance for any location

ChronoMap Developer Kit® performs simultaneously drive time and distance analysis while optimizing one of these criteria. ChronoMap Developer Kit® does not limit departures and arrivals points to nodes in its road navigation database: it uses curvilinear positioning and dynamic network segmentation to allow exact and accurate processing of your locations.

Mileage chart

ChronoMap Developer Kit® includes a specific method for mileage chart building calculations (in time and distance). Such method is extremely fast thanks to dedicated treatments like for instance "one-to-many" or "many-to-one".

Routing Directions

ChronoMap Developer Kit® computes shortest and fastest route from departure to arrival, including way points and will output but best possible road book and road map for the end-user.

Geocoder

ChronoMap Developer Kit® provides functions for controlled address input, semi-automated geocoding, batch geocoding and reverse geocoding *.

Drive Zones

ChronoMap Developer Kit® renders high quality Drive Zones areas ready to be displayed onto the DataPack Map (provided) or to feed in your GIS environment to process drive time based spatial selections.

Sectors

With ChronoMap Developer Kit®, identify multiple facilities and compute sectors based on drive time: ChronoMap Developer Kit® will identify the potential district/sector for each of the facility.

Assignments

Given a set of facilities and a set of customers, ChronoMap Developer Kit® unique assignment feature will automatically assign each customer to the nearest, drive time or distance wise, facility.

Driving behavior

ChronoMap Developer Kit® comes with a VehicleProfile object that will let you customize driving speed, preferred roads and quickest or shortest route queries.

**: availability of the geocoding functionality on some countries only*

ChronoMap® Developer Kit exists in Windows and Linux version

Windows

ChronoMap® Developer Kit for Windows requires Windows NT 4.0 sp3 and above, Windows 2000, or Windows XP to execute properly. Building

ChronoMap® Developer Kit for Windows is packaged either as a 32-bit COM DLL which can be accessed directly by ASP, Visual Basic, and other COM supported environments such as Borland Delphi.

ChronoMap® Developer Kit for Windows is also packaged as a standard C DLL which can be used thru the provided C++ Framework, providing direct access to objects without getting COM ruling in the way.

Linux

ChronoMap® Developer Kit for Linux is built and tested on Debian Sarge 3.1 for i386 and x86_64 architectures

ChronoMap® Developer Kit for Linux is packaged as a standard shared library which can be used thru the provided C++ Framework

More about MagellanIngénierie's product range, extension and integration possibilities at:
www.magellan-ing.fr

Magellan Ingénierie's product range

Large product portfolios to answer best your needs and requirements:

? **Add-on solutions:** Turn-key applications (TourSolve for mapPoint or MapInfo, ChronoMap for MapInfo, Geocoder). Desktop-only.

? **Integrated components:** "all-in-one" programming components (include: viewer, maps, etc.). For customized desktop or server applications development.

For local sales and support, please contact:

DataGis GmbH
 Johann-Strauß-Str. 26
 70794 Filderstadt
 Tel.: 07158 940267
 E-Mail: info@datagis.com